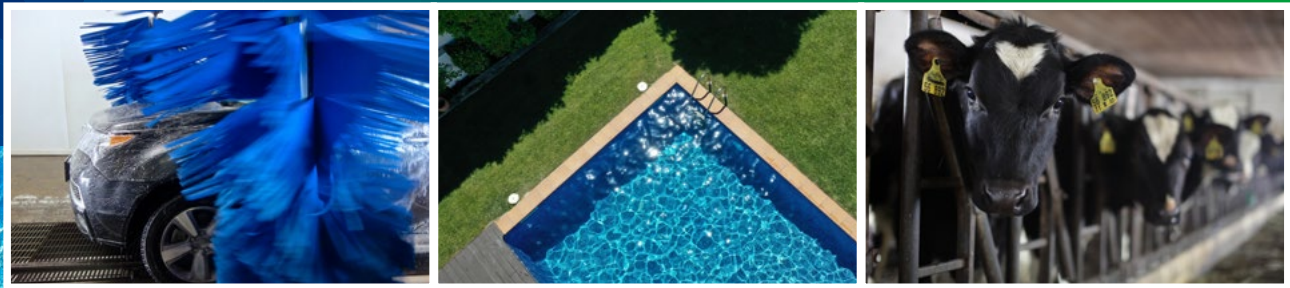


Safety first!

Protect drinking water from recontamination with Cat-5 break tank booster systems from DEHOUST



DEHOUST
ENERGY. HEAT. WATER.

Stay on the safe side with DEHOUST



DEHOUST break tank booster systems in accordance with EN 1717 for process water of liquid category 5 ensure maximum safety.

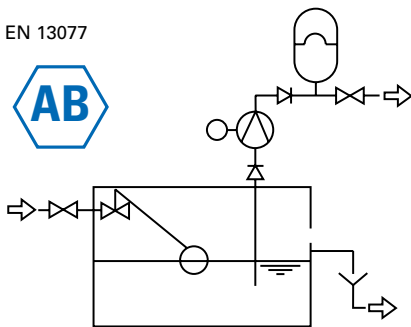
The systems developed by DEHOUST offer the highest level of protection for separate drinking water and process water systems. As an operator and installer, you are on the safe side.

System separation for process water is a professional matter – that is why you should put design and execution in the hands of specialised companies and leave nothing to chance when it comes to drinking water protection.

Examples for a free outlet

- ▶ Washing fruit and vegetables (food establishments)
- ▶ Pre-washing and washing of dishes and kitchen utensils
- ▶ Wastewater
- ▶ Water from body cleaning
- ▶ Water for animal drinking troughs
- ▶ Swimming pool water
- ▶ Washing machine water
- ▶ Toilet water
- ▶ Cleaning in slaughterhouses
- ▶ Cooling system supply
- ▶ Underground sprinkler system

EN 13077



For the safe separation of process water and drinking water

Cat-5 break tank booster systems for any capacity and purpose from 2 m³/hour to over 20 m³/hour also as double-pump systems.



Wall-mounted Cat-5 break tank booster system from 2 to 3.2 m³/hour



Floor-standing Cat-5 break tank booster system up to 5 m³/hour



Floor-standing Cat-5 break tank booster system up to 7 m³/hour



Compact CONNECT Cat-5 break tank booster system with double pump



CONNECT Cat-5 break tank booster system with large feed tank and double pump



Cat-5 break tank with emergency overflow type AB in accordance with EN 13077



THE RIGHT SOLUTION
FOR EVERY REQUIREMENT

Wall mounted Cat-5 break tank booster system

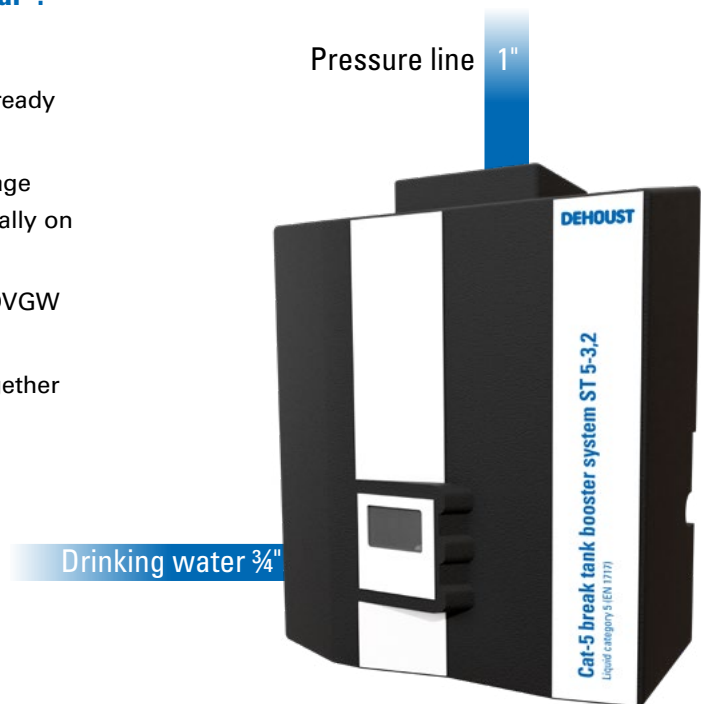
For the safe separation of process water and drinking water in private and commercial installations for flow rates from 2 to over 3 m³/hour*.

The safety Cat-5 break tank booster systems is supplied ready for connection in 2 sizes.

The float valve automatically tops up the integrated storage tank – the achievable continuous output depends essentially on the drinking water supply.

The free outlet type AB in accordance with EN 13077 is DVGW certified.

Pumps specially developed for process water supply, together with the robust flow monitor, ensure a reliable supply of process water to users.



Cat-5 break tank booster system	ST 5-2,7	ST 5-3,2
Article no.	812307	813092
max. flow rate in m ³ /hour*	2.7	3.2
max. conveying height in m	44	68
Switch-on pressure in bar	2.4	1.5
Drinking water quantity to top up at 2 bar flow pressure (m ³ /hour)	1.5	1.8
Drinking water quantity to top up at 4 bar flow pressure (m ³ /hour)	2.7	3.2
Supply voltage	230 V / 50 Hz / 16 A	230 V / 50 Hz / 16 A
Connecting load in W	805	1505
Drinking water connection	¾" OT	¾" OT
Connection to process water supply	1" OT	1" OT
Connection to emergency overflow	DN 50	DN 70
Net capacity of tank in liters	4.5	7
Total height in mm	580	734
Width in mm	380	596
Depth in mm	295	300
Empty weight in kg	25	27

*The conveying volume depends on the drinking water supply, in case of weak line pressure we recommend devices with a larger supply tank.

No chance of recontamination

Cat-5 break tank booster systems in accordance with EN 1717



Interior view ST 5-3,2



Sprinkler systems and underground piping must also be separated by "free outlet" in private areas.



THE STRICT RULES OF EN 1717 ALSO APPLY IN THE PRIVATE SECTOR.

Multistage centrifugal pump for higher continuous output and smoother running

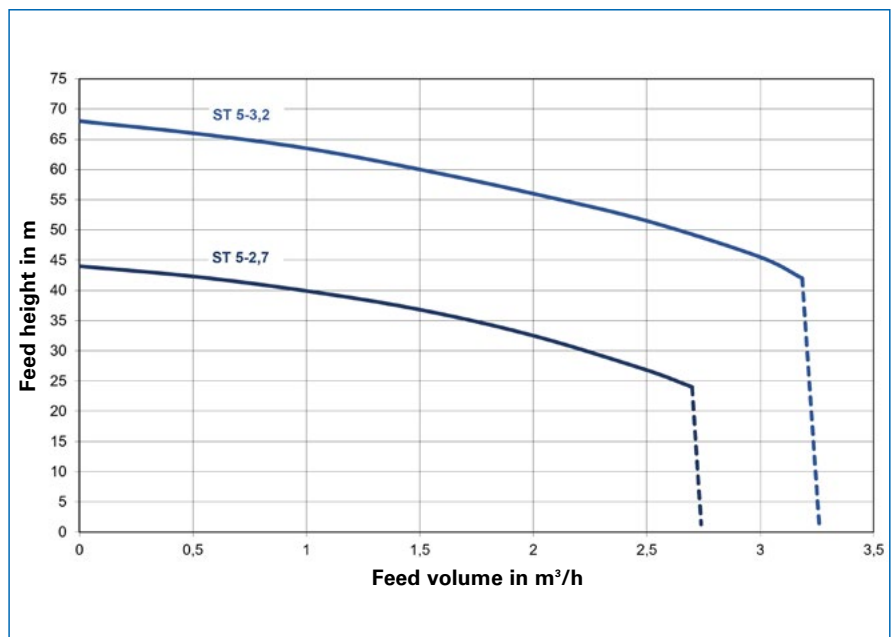


ST 5-2,7



ST 5-3,2

For more information, scan the QR code or enter the item number in the dehoust.com search box.



Separation station ST 5 floor-standing

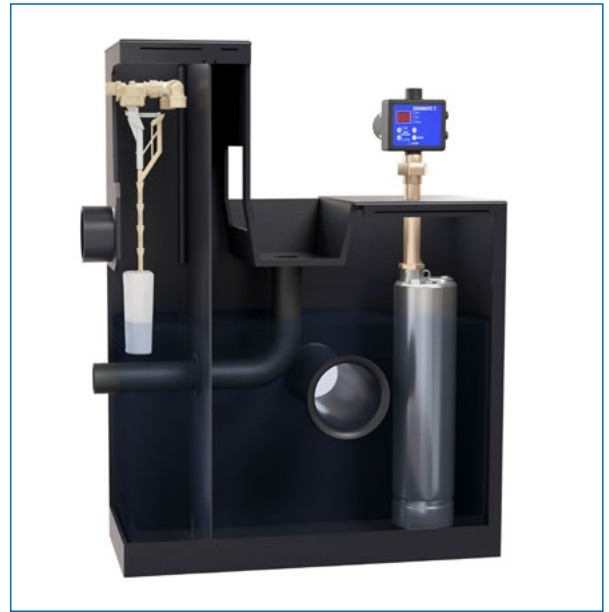
With large storage tanks to compensate for fluctuations in the drinking water network for capacities from 4 to over 7 m³/hour.*

High volume and space-saving design are what set this Cat-5 break tank booster system apart.

The arrangement of the proven float valve on type ST 5-4.3 or the water-cooled solenoid valve on type ST 5-7.2 prevents splashing water at the drinking water inlet even with high top-up volumes. Any water escaping through the free outlet type AB in accordance with EN 13077 is drained in a controlled manner. However, the break tanks are only placed in rooms with floor drain.

Submerged pumps ensure extremely quiet running and the adjustable flow monitor ensures adapted operation.

Flow switch with dry contact for monitoring possible alarm messages from the submersible pump.



ST 5-4.3 floor-standing, interior view

Cat-5 break tank booster system	ST 5-4,3	ST 5-7,2
Article no.	814261	814265
max. flow rate in m ³ /hour*	5	7.2
max. conveying height in m	56	68
Switch-on pressure in bar	adjustable to between 0.5 and 4	adjustable to between 0.5 and 4
Drinking water quantity to top up at 2 bar flow pressure (m ³ /hour)	3	5
Drinking water quantity to top up at 4 bar flow pressure (m ³ /hour)	4.3	7.2
Supply voltage	230 V / 50 Hz / 16 A	230 V / 50 Hz / 16 A
Connecting load in W	1050	1560
Drinking water connection	¾" OT	¾" IT
Connection to process water supply	1" OT	1" OT
Connection to emergency overflow	DN 100	DN 100
Useful volume tank in liters	110	110
Total height in mm	1,010	1,105
Width in mm	300	300
Depth in mm	820	820
Empty weight in kg	36	36

*The conveying volume depends on the drinking water supply, in case of weak line pressure we recommend devices with a larger supply tank.

Water fun with safety

Cat-5 break tank booster systems for maximum protection



ST 5-7,2 floor-standing



Cleaning work in equestrian sports, animal breeding, stables but also in trade and industry only with consistent compliance with EN 1717 with protection against recontamination through free outlet.



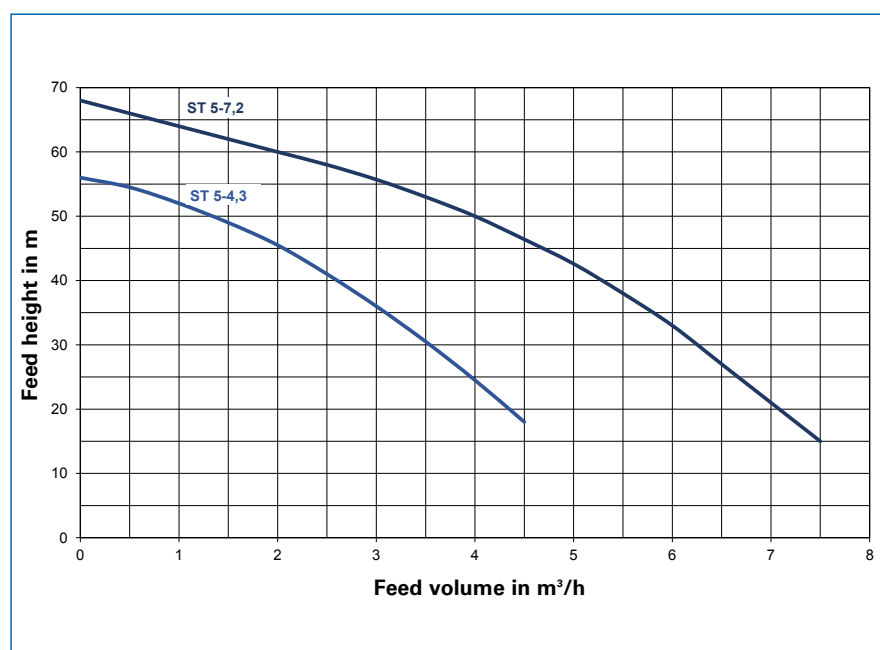
ST 5-4,3



ST 5-7,2

For more information, scan the QR code or enter the item number in the dehoust.com

Submersible pumps for more power and smoother running



DEHOUST

Heat.
Energy-Water.

STORAGE & UTILIZATION

DEHOUST CONNECT, so you always have an eye on your Cat-5 break tank booster system!

For business and industry, farms and animal husbandry, hotels and residential homes, public buildings.

Redundant and monitored through a secure internet connection.



DEHOUST GmbH

69181 Leimen

Gutenbergstr. 5-7

Phone +49 62 24 / 97 02-0

Fax +49 62 24 / 97 02-70

31582 Nienburg

Forstweg 12

Phone +49 50 21 / 97 03-0

Fax +49 50 21 / 97 03-70

01809 Heidenau

Dürerstr. 1

Phone +49 35 29 / 56 58-0

Fax +49 35 29 / 56 58-70

53783 Eitorf

Wecostr. 7-11

Phone +49 22 43 / 92 06-0

Fax +49 22 43 / 92 06-66

www.dehoust.com

The information in this publication is subject to change. We reserve the right to make technical changes without prior notice. Performance specifications are non-binding; a guaranteed feature cannot be derived from them. The terms and conditions agreed with our order confirmation shall apply exclusively.

The country-specific approvals and installation regulations must be complied with.



www.dehoust.com